



P R O X I M I T Y



A V A I L A B I L I T Y



R E A C T I V I T Y



HSEQ



SHP



AUDIT - CONSULTING



TRAINING



Professional risk management

HEALTH SAFETY ENVIRONMENT QUALITY

OUR OBJECTIVES

Identify and evaluate professional risks in order to set up a prevention policy adapted to your company's needs

Improve the control of hazardous materials

Enhance safety procedures for equipment and work activities

Keeping in mind different aspects of **environmental protection**

HYGIENE AND HEALTH

- ➔ Calculate the site dimensions and living areas (base camp)
- ➔ Manage the relationships with suppliers linked to your business (personal protective equipment, area cleanliness ...)
- ➔ Provide first aid assistance and manage safety prevention campaigns
- ➔ Ensure the best employment conditions and anticipate potentially dangerous working conditions
- ➔ Improve the ergonomics of work stations
- ➔ Team training for first aid at the workplace

QUALITY

- ➔ Apply for certification ISO 9001 : Quality Management System
- ➔ Ensure and promote the implementation of continuous improvement and Lean approach
- ➔ Define and implement your objectives for quality and policies on-site
- ➔ Maintain a regulatory and technologic survey
- ➔ Initiate internal and external communication for new quality standards
- ➔ Write specific standards and procedures
- ➔ Analyze the results and follow-up with continuous improvement actions

OUR PROFILES

Engineering Consultant (short- to long-term contracts)
HSEQ Supervisor
HSEQ Animator

SAFETY

- ➔ Apply for certification OHSAS 18001 : Occupational Health and Safety Management
- ➔ Evaluate and respond to the calls for proposals with the client
- ➔ Advise our clients
- ➔ Devise and implement prevention plans
- ➔ Manage clearances levels for staff security
- ➔ Develop and conduct staff training for health and safety at work
- ➔ Set up internal safety audits
- ➔ Monitor non-compliance issues and set up action plans
- ➔ Analyze work accidents and utilize the statistics to find solutions
- ➔ Uphold current internal policy (work permit, fire permit, excavation permit) and regulations (lifting plan)

ENVIRONMENT

- ➔ Achieve certification ISO 14001 : Environmental Management System
- ➔ Conduct environmental risk audit
- ➔ Analyze treatment and the value of waste
- ➔ Manage storage for chemical products
- ➔ Comply with REACH regulations
- ➔ Optimize resources and energy consumption
- ➔ Prevent accidental pollution

OUR FIELDS OF ACTIVITY

Oil and Gas
Petrochemistry and Chemistry
Metal industry and Construction
Aeronautic

SOME REFERENCES



SAFETY AND HEALTH PROTECTION

FRENCH REGULATORY FRAMEWORK

General Coordination Plan for safety and health protection in building operations and civil engineering (law of December 31, 1993) in conception and realization phases.

OUR OBJECTIVES

Establish a personal and positive relationship with the client

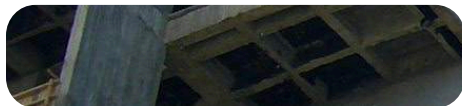
Detail a General Coordination Plan, well-suited for specific processes
Create a plan of Subsequent Works on Installations

Provide recommendations to the client for specific contractors

Anticipate potentially hazardous situations during construction work

CONCEPTION

- 1 Conduct a site visit
- 2 Provide a preliminary written report with the analysis of risks related to the natural environment of the site
- 3 Engineering consulting for the client
- 4 Anticipate the construction operating method and implement safety measures for the entire process
- 5 Detail the General Coordination Plan for safety and health protection



EXECUTION

- 6 Participate in organized inspection visits with the different companies working together
- 7 Harmonization of the Individual Safety and Health Protection Plan
- 8 Analyze and validate the operational methods before construction begins
- 9 Scheduled and unscheduled visits to the site and attendance at the construction meetings.



FINALISATION

- 10 Create a Plan of Subsequent Works on Installations



OUR PROFILES

Health and safety officer
3 levels: 1 (low), 2 (medium) and 3 (high)

OUR FIELDS OF ACTIVITY

Oil and Gas
Petrochemistry and Chemistry
Construction

SOME REFERENCES



AUDIT - CONSULTING

SAFETY AUDIT - CONSULTING

OUR OBJECTIVES

In-depth analysis and audit of your current safety management system

Advise our client and their company on permits and building regulations

Suggest suitable solutions to your problems

Optimize your safety management system and improve protection standards for workers

YOUR NEEDS

- Create a map and evaluation of different levels of risk
- Evaluate and keep track of your regulatory compliance
- Lock-out the equipment for a safety situation
- Manage risks on-site
- Identify the explosive atmosphere areas
- Comply with REACH regulations

- Implement a process for welcoming new employees to the site
- Prepare and follow prevention plans
- Analyze work accidents, professionally hazardous diseases or dangerous situations
- Set up a safety management system

ENVIRONMENTAL AUDIT - CONSULTING

OUR OBJECTIVES

Analyze environmental practices for each site

Control the impact on the environment

Assist companies in becoming certified

Set action plans

YOUR NEEDS

- Analyze and optimize garbage collection
- Characterize waste = residual household waste, selective collection, industrial common and dangerous waste
- Give advice for environmental reconversion of the site
- Optimize your energy and resources
- Prevent noise generated by work processes
- Evaluate conformity to regulations

- Create a file for Installation Classified for the Protection of the Environment
- Initiate studies on possible hazards and their environment
- Set up an Environmental Management System
- Reduce the chemical and energy consumption by the company
- Prevent accidental pollution

TRAINING

OUR OBJECTIVES

Provide specialized quality trainers for teaching safety procedures

Give awareness and involve your staff in risk prevention

Train your team to practise best safety methods

Respond to your specific needs and adapt our trainings for you

SAFETY

- ➔ Define, analyze and manage work accidents
- ➔ Apply safety protocol
- ➔ Prevent risks related to hazardous chemicals
- ➔ Prevent risks related to explosive atmospheres
- ➔ Raise awareness on transporting hazardous materials



HEALTH AND SAFETY AT WORK

- ➔ Gain knowledge of health and safety regulations at work
- ➔ Set up a methodology for evaluating professional risks
- ➔ How to use a defibrillator

HEALTH, SAFETY AND ENVIRONMENT IN CONSTRUCTION

CONCEPTION PHASE

- ➔ Create a prevention plan
- ➔ Initiate safety training for newcomers

EXECUTION PHASE

- ➔ Prepare and conduct a safety visit on-site
- ➔ Put into place the consignment and deconsignment
- ➔ Start a program for waste management





RENOWNED EXPERTISE

Created in 1996, CALESTREME C.S is a consulting and engineering firm that has been a reference of expertise in the field of risk management for nearly 20 years.

A rich diversity in our collaborators' profiles and level of experience, the company is able to provide numerous services in the fields of:

- Health, Safety, Environment and Quality
- Safety & Health Protection at work
- Audit & Consulting
- Training

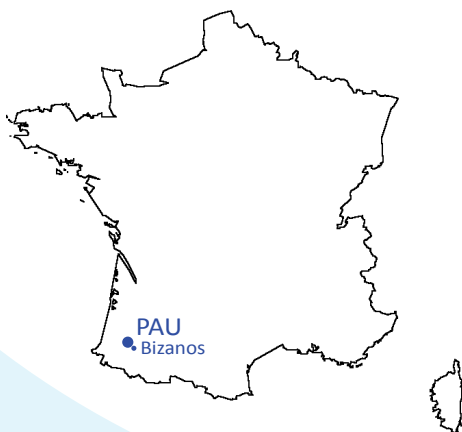
PERSONALIZED SUPPORT

A Company with a strong investment in our clients, we focus primarily on availability, responsiveness and having personal relationships with our customers.

We offer real-time technical support, an additional benefit at no extra cost.

ACTIVE AND PARTICIPATIVE APPROACH

Our team is dynamic and serious, constantly in close collaboration with our clients. Our goal is to provide completely care and management for all safety aspects of your business.



CALESTREME C.S.

Head Office

7 Maréchal Ferrant Street
64 510 BOEIL BEZING
FRANCE

Offices

17 Albert 1er Avenue
64 320 BIZANOS
FRANCE

Tel : +33 (0)5 59 53 12 95

Fax : +33 (0)5 59 53 15 22

Email : contact@calestreme-cs.com